

## Criterion 4 – Infrastructure and Learning Resources

### Key Indicator – 4.2 Clinical, Equipment and Laboratory Learning Resources

#### 4.2.1

Teaching Hospital, equipment, clinical teaching-learning and laboratory facilities are as stipulated by the respective Regulatory Bodies

#### Department of Conservative Dentistry and Endodontics



#### Department of oral pathology:

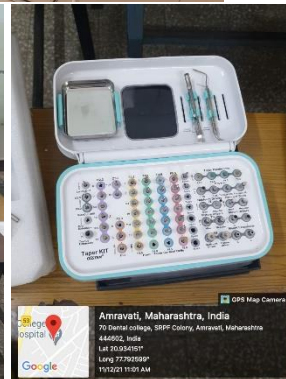




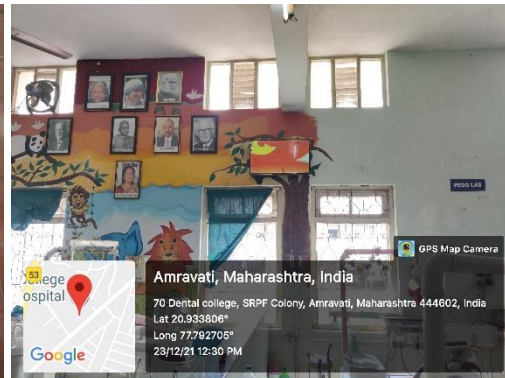
Department of oral medicine diagnosis and radiology



Department of oral surgery



Department of pedodontics:



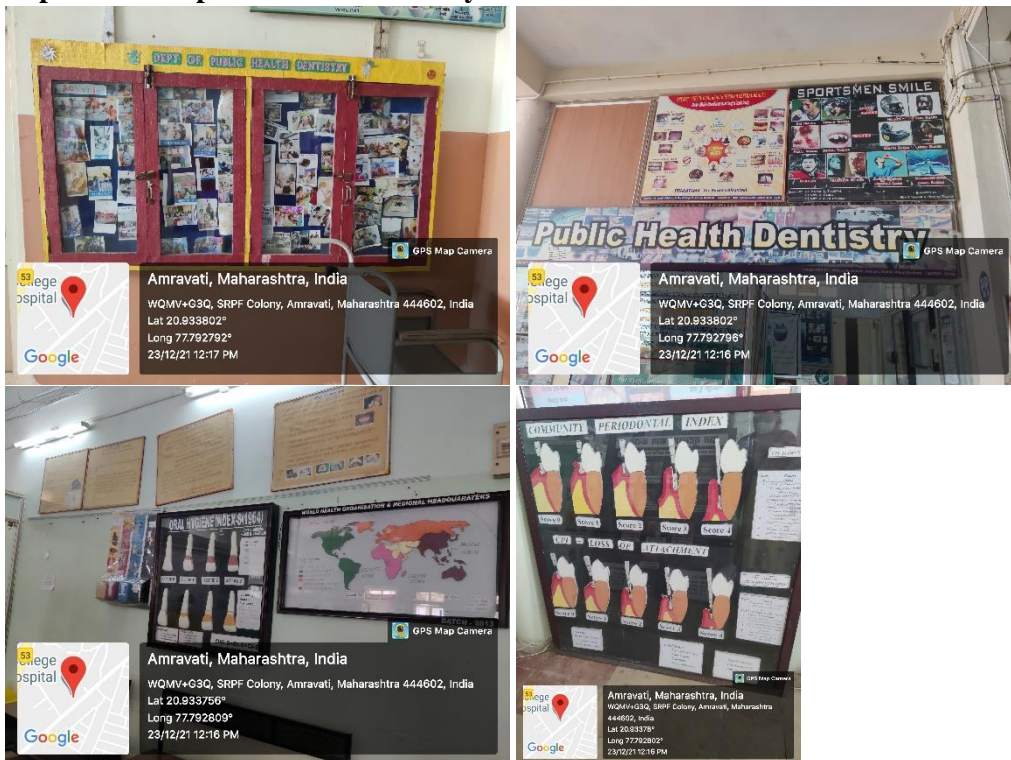


Department of periodontology:





Department of public health dentistry:





Department of prosthodontics:

